

▼ OE STYLE FORMED END TIPS / DIE-CUT TIPS



758T5



BT4Q2



12501DC – Chrome



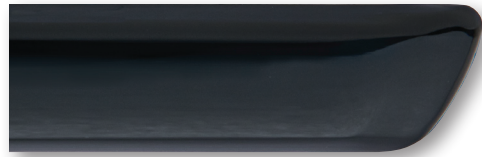
148R3BT



15000CI SERIES – Chrome Insert
Colors available
Packaged in a four-piece kit



20000CI SERIES – Chrome Insert
Colors available
Packaged in a four-piece kit



75000AT SERIES
Colors: 040, 070, 1F7, 202, 3R3, 4T8, 8T5, 8V1



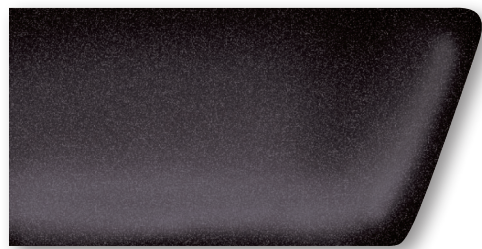
BT000 SERIES
Color Group: "B" High Gloss
Packaged in two 8 ft. lengths with formed tips on all ends



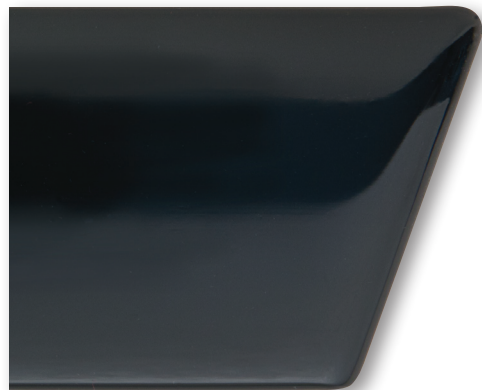
12500DC SERIES
Colors available



14000BT SERIES
Color Group "B" and "C"
Packaged in two 7 ft. lengths with formed tips on all ends



15000AT SERIES
Color Group "C" and "D"
Packaged in two 7 ft. lengths with formed tips on all ends



20000AT SERIES
Colors: 040, 070, 1F7, 1G3, 202, 3L5, 3R3, 4T8, 8S6, 8T7, 99
Packaged in two 7 ft. lengths with formed tips on all ends

Actual products are larger than illustrated.

DRIP RAIL ▼

TRUCK WHEEL ▼
WELL MOLDINGS